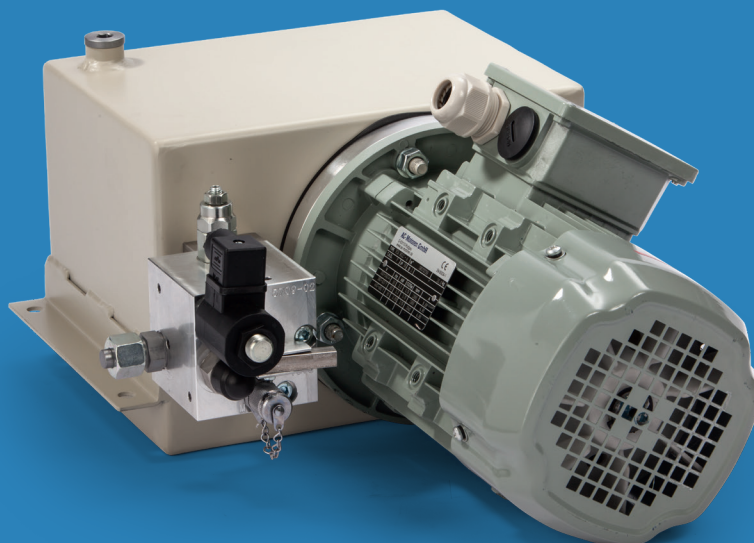


BF10



Description

Thanks to their low overall height, these hydraulic units are perfectly suited for confined installation spaces, such as those found in lifting tables. The installation height is based on the flange diameter of the electric motor and is only 250 mm for this type.

In addition to the lift/lower module, which is regarded as the standard for lifting devices, further hydraulic circuits are possible, see pages 5-8 of this data sheet.

Due to its design, this compact unit is designed for intermittent operation, i.e., continuous operation is only possible with reduced power. If not indicated otherwise, the power ratings apply to operating mode S3-10%.

Technical Data

Operating voltage

400 V, 50 Hz, 3 ~ / 480 V, 60 Hz, 3 ~
Special voltages available

Nominal tank volume

10 litres

Filling capacity

8,5 litres

Effective volume

7,0 litres

Vertical assembly possible. Further data according to type code (page 3)

Operating conditions

Permissible operating media

Mineral oil HLP, DIN 51524, ISO VG 22,
32 or 46

Permissible operating temperature

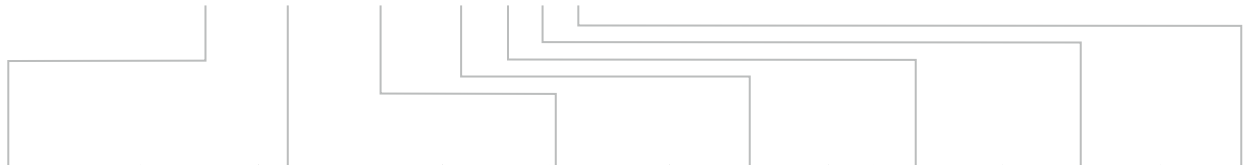
-10°C to +80°C

Maximum operating pressure dependent
 on installed capacity and pump flow rate

Capacity	0,37 kW	0,55 kW	0,75 kW	1,1 kW	1,5 kW	2,2 kW	3,0 kW	4,0 kW	Number of poles e-motor	Working volume of pump
Pump flow rate										
0,7 l/min	230 bar								6-pole	0,80 cm ³ /U
1,1 l/min		230 bar							4-pole	0,80 cm ³ /U
1,5 l/min		190 bar	230 bar						4-pole	1,05 cm ³ /U
1,7 l/min		170 bar	230 bar						6-pole	1,80 cm ³ /U
2,1 l/min			190 bar	230 bar					4-pole	1,45 cm ³ /U
2,3 l/min				230 bar					2-pole	0,80 cm ³ /U
2,6 l/min		114 bar	150 bar	225 bar	230 bar				4-pole	1,80 cm ³ /U
3,0 l/min				195 bar	230 bar				2-pole	1,05 cm ³ /U
3,5 l/min			115 bar	170 bar	230 bar				4-pole	2,45 cm ³ /U
4,0 l/min					200 bar				6-pole	4,30 cm ³ /U
4,2 l/min			95 bar	140 bar	190 bar	230 bar			2-pole	1,45 cm ³ /U
4,4 l/min				135 bar	180 bar	230 bar			4-pole	3,05 cm ³ /U
5,2 l/min				110 bar	155 bar	230 bar			2-pole	1,80 cm ³ /U
5,4 l/min				110 bar	150 bar	220 bar	230 bar		4-pole	3,80 cm ³ /U
6,1 l/min				95 bar	130 bar	195 bar	230 bar		4-pole	4,30 cm ³ /U
6,7 l/min				85 bar	120 bar	175 bar	230 bar		4-pole	4,70 cm ³ /U
7,1 l/min				80 bar	110 bar	165 bar	225 bar	230 bar	2-pole	2,45 cm ³ /U
8,8 l/min					90 bar	135 bar	180 bar	230 bar	2-pole	3,05 cm ³ /U
10,9 l/min						105 bar	145 bar	195 bar	2-pole	3,80 cm ³ /U
12,4 l/min						90 bar	130 bar	170 bar	2-pole	4,30 cm ³ /U
13,5 l/min						85 bar	120 bar	155 bar	2-polig	4,70 cm ³ /U

→ Further combinations on request

Type code: BF10-XXX-XXX-XXXX-XX-X-X-X-Y



Installed performance		Pump flow rate		Control voltage		Hydraulic circuit diagram	Installation position		Hydraulic connection	Construction status
037	0,37 kW	007	0,7 l/min	012D	12V DC	see pages 5-8	H	Horizontal	G1_4	
055	0,55 kW	011	1,1 l/min	024D	24V DC		V	Vertical	G3_8	
075	0,75 kW	015	1,5 l/min	024A	24V AC		S	Special	G1_2	
110	1,1 kW	017	1,7 l/min	230A	230V AC				8L	
150	1,5 kW	021	2,1 l/min						10L	
220	2,2 kW	023	2,3 l/min						12L	
300	3,0 kW	026	2,6 l/min						15L	
400	4,0 kW	030	3,0 l/min						8S	
		035	3,5 l/min						10S	
		040	4,0 l/min						12S	
		042	4,2 l/min							
		044	4,4 l/min							
		052	5,2 l/min							
		054	5,4 l/min							
		061	6,1 l/min							
		067	6,7 l/min							
		071	7,1 l/min							
		088	8,8 l/min							
		109	10,9 l/min							
		124	12,4 l/min							
		135	13,5 l/min							

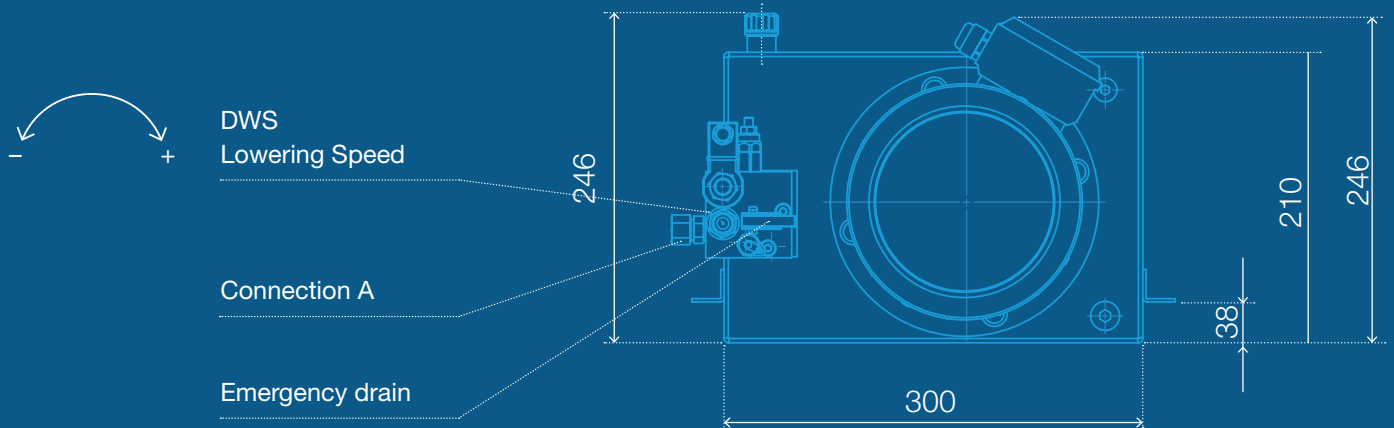
Additions configurable as:	
Abbreviation	Meaning
90DEG	Swivelling by 90 degrees
AH	Drain cock
BIM	Electric motor with bimetallic release
EX	Relevant components with explosion protection
HEIZ	Heating
HFC	Water glycol
KAL	Electric motor with PTC resistor
LED	Valve fault module with LED
MAN	Pressure gauge
NAT	Level indicator with temperature indicator
NS	Level switch
OEW	Oil tray
PN	Pressure switch
RF	Return flow filter
S1	Motor for S1 operation
TM47	Temperature switch
TW	Drip pan
V0	For RF contamination indicator optical
VS	For RF contamination indicator switch
WM	Wall assembly (for V installation position)

Example type: BF10-110-030-024D-AJ-H-G3_8-1-BIM-PN-RF

Many other combinations are possible!

Dimensions vary depending on hydraulic circuit and design.

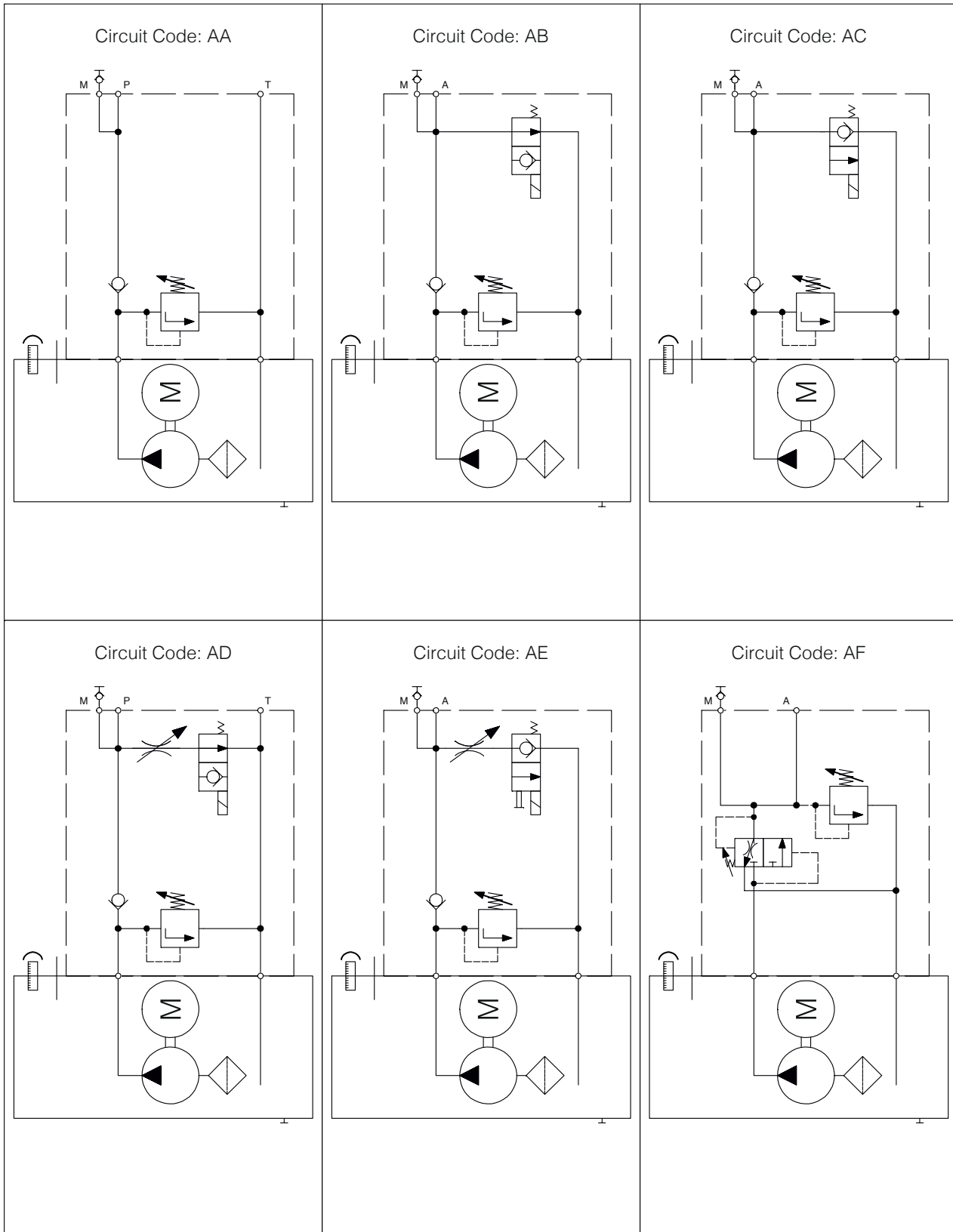
The following dimensions are examples:
Type BF10-XXX-XXX-XXXX-AJ-H-12S-1



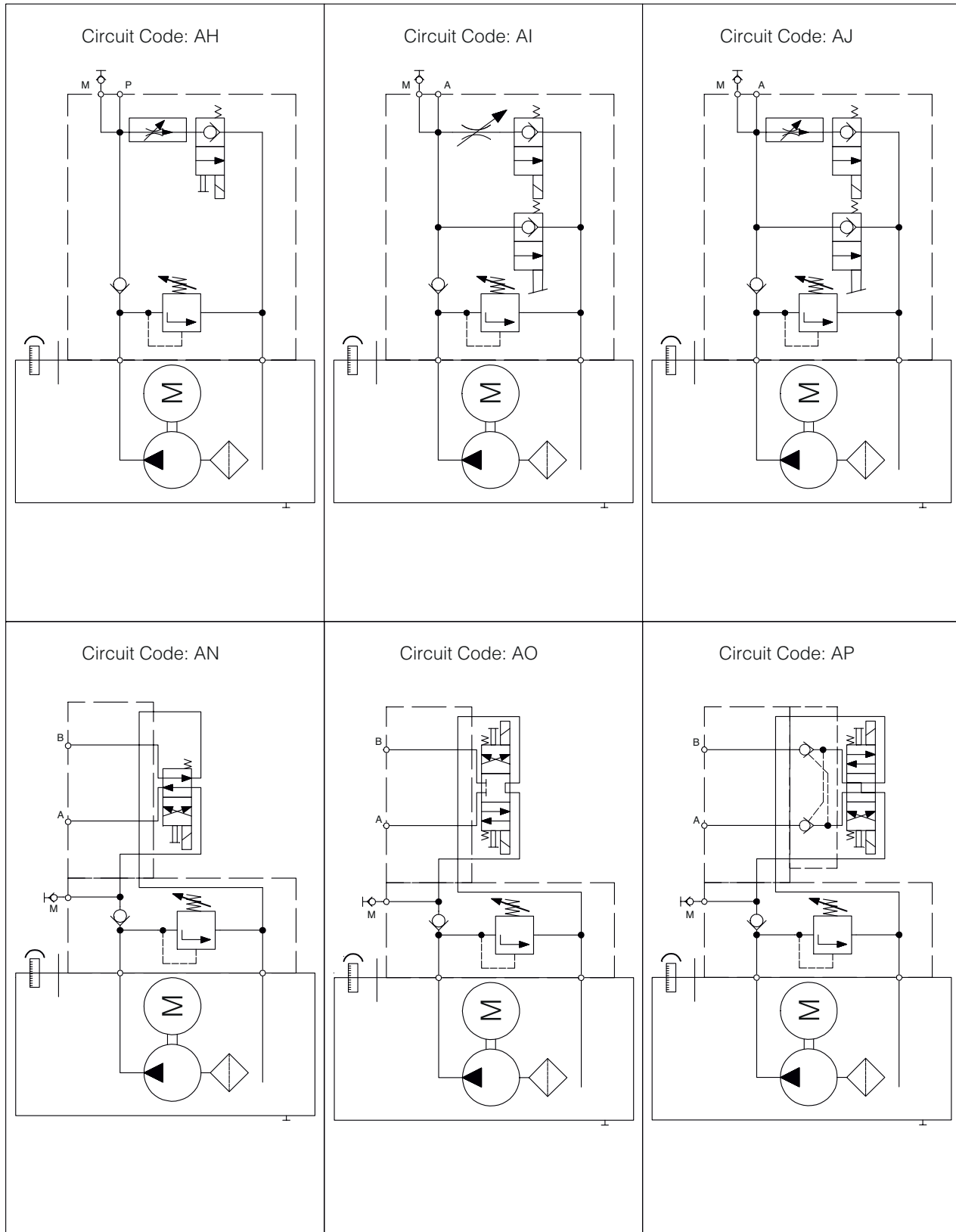
Performance [kW]	D [mm]
0,37 kW	492
0,55 kW	492
0,75 kW	492
1,10 kW	492
1,50 kW	532
2,20 kW	532
3,00 kW	532
4,00 kW	532



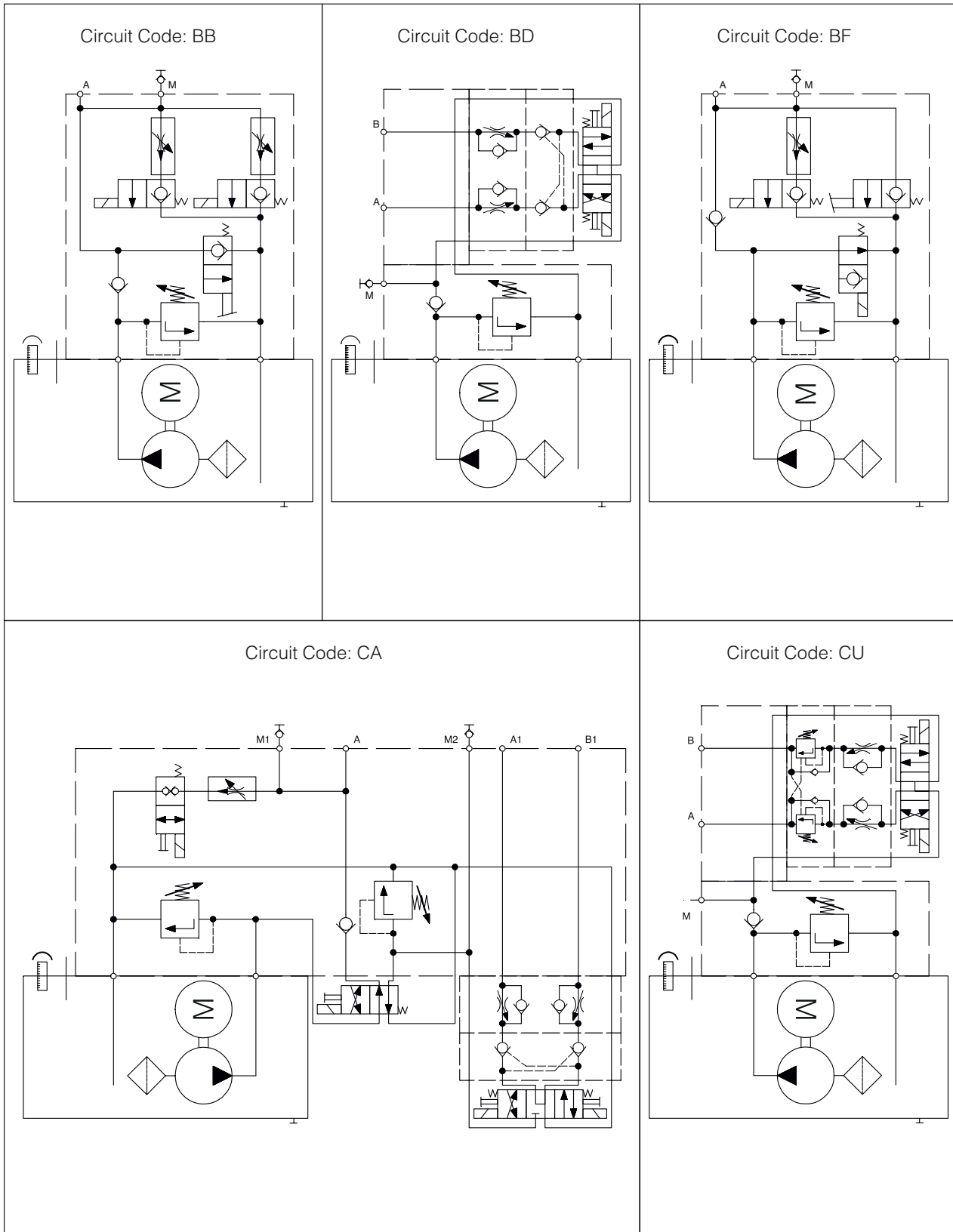
Hydraulic circuit diagrams



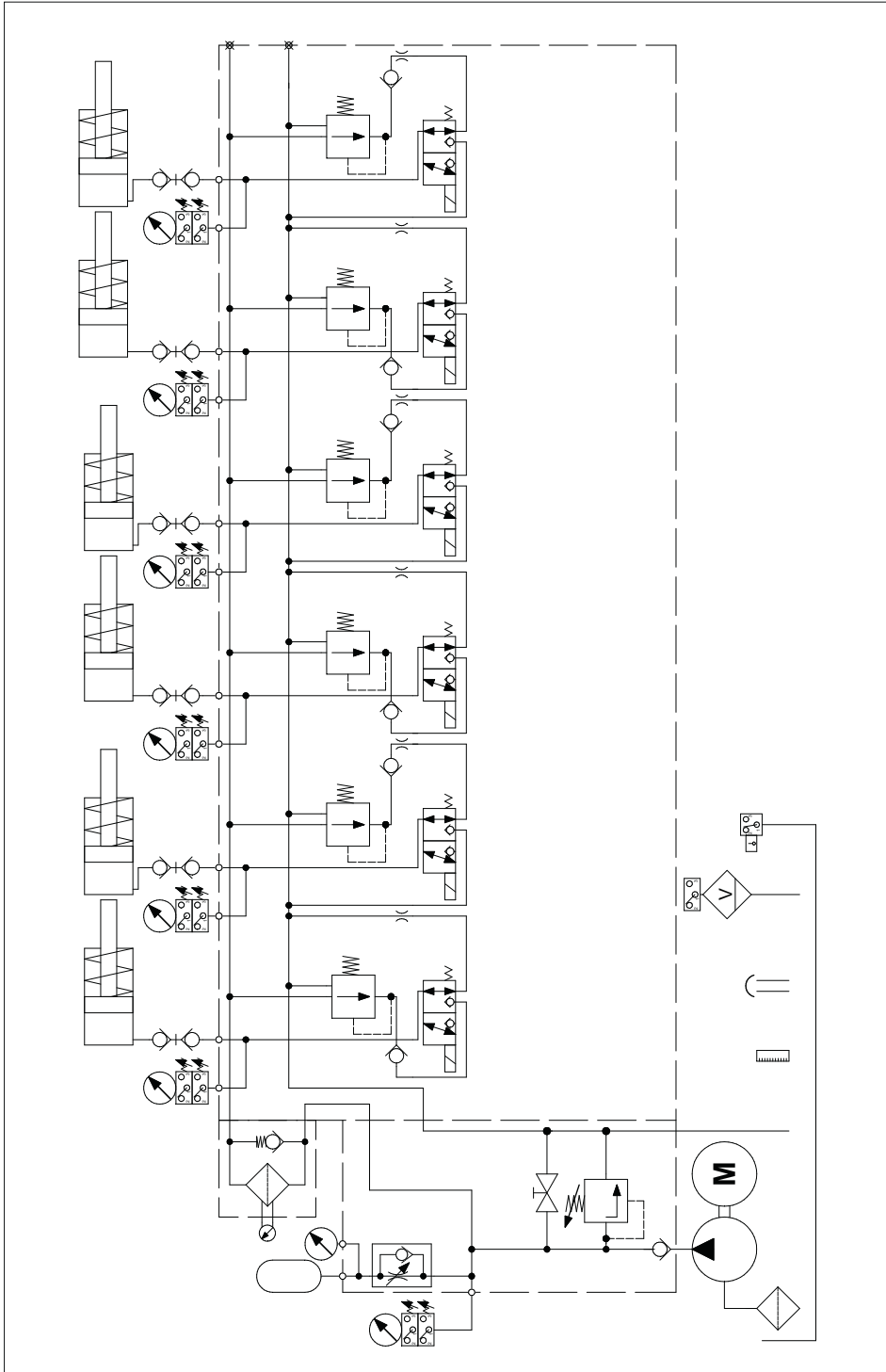
Hydraulic circuit diagrams



Hydraulic circuit diagrams



Hydraulic circuit diagrams



Here is an example of our possibilities (see above):

Various combinations are possible. Please feel free to contact us!

We will develop your idea into our product!