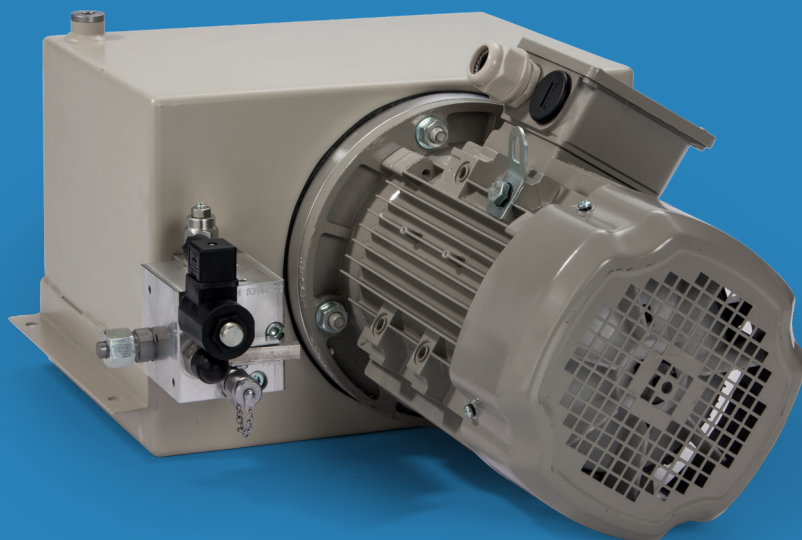


BF25



Description

Thanks to their low overall height, these hydraulic units are perfectly suited for confined installation spaces, such as those found in lifting tables. The installation height is based on the flange diameter of the electric motor and is only 308 mm for this type.

In addition to the lift/lower module, which is regarded as the standard for lifting devices, further hydraulic circuits are possible, see pages 5-8 of this data sheet.

Due to its design, this compact unit is designed for intermittent operation, i.e., continuous operation is only possible with reduced power. If not indicated otherwise, the power ratings apply to operating mode S3-10%.

Technical data

Operating voltage

400 V, 50 Hz, 3 ~ / 480 V, 60 Hz, 3 ~
Special voltages available

Nominal tank volume

25 litres

Filling capacity

approx. 21 litres

Effective volume

approx. 16.5 litres

Vertical assembly possible. Further data according to type code (page 3)

Operating conditions

Permissible operating media

Mineral oil HLP, DIN 51524, ISO VG 22,
32 or 46

Permissible operating temperature

-10°C to +80°C

Maximum operating pressure dependent
 on installed capacity and pump flow rate

Capacity	2,2 kW	3,0 kW	4,0 kW	5,5 kW	7,5 kW	11,0 kW	Number of poles e-motor	Working volume of pump
Pump flow rate								
3,5 l/min	260 bar						4-pole	2,45 cm ³ /U
4,4 l/min	260 bar						4-pole	3,05 cm ³ /U
5,5 l/min	216 bar	260 bar					4-pole	3,80 cm ³ /U
6,9 l/min		260 bar					2-pole	2,45 cm ³ /U
7,3 l/min	164 bar	223 bar	260 bar				4-pole	5,00 cm ³ /U
8,5 l/min		190 bar	250 bar	260 bar			2-pole	3,05 cm ³ /U
9,0 l/min	132 bar	180 bar	240 bar	250 bar			4-pole	6,20 cm ³ /U
10,6 l/min		152 bar	203 bar	260 bar			2-pole	3,80 cm ³ /U
11,5 l/min			188 bar	250 bar			2-pole	4,10 cm ³ /U
11,9 l/min	99 bar	136 bar	182 bar	250 bar			4-pole	8,20 cm ³ /U
13,2 l/min		123 bar	164 bar	226 bar	240 bar		2-pole	4,70 cm ³ /U
14,0 l/min			154 bar	212 bar	276 bar		2-pole	5,00 cm ³ /U
16,2 l/min		100 bar	133 bar	183 bar	250 bar		4-pole	11,20 cm ³ /U
17,4 l/min			124 bar	171 bar	233 bar	250 bar	2-pole	6,20 cm ³ /U
20,3 l/min			106 bar	146 bar	200 bar	240 bar	4-pole	14,00 cm ³ /U
23,0 l/min				129 bar	176 bar	250 bar	2-pole	8,20 cm ³ /U
23,2 l/min			93 bar	128 bar	175 bar	240 bar	4-pole	16,00 cm ³ /U
29,0 l/min			74 bar	102 bar	140 bar	200 bar	4-pole	20,00 cm ³ /U
31,4 l/min				95 bar	129 bar	189 bar	2-pole	11,20 cm ³ /U

→ Further combinations on request

Type code: BF25-XXX-XXX-XXXX-XX-X-X-X-Y

Installed performance		Pump flow rate		Control voltage		Hydraulic circuit diagram	Installation position		Hydraulic connection	Construction status
022	2,2 kW	035	3,5 l/min	012D	12V DC	siehe Seite 5-8	H	Horizontal	G3_8	
030	3,0 kW	044	4,4 l/min	024D	24V DC		V	Vertical	G1_2	
040	4,0 kW	055	5,5 l/min	024A	24V AC		S	Special	10L	
055	5,5 kW	060	6,0 l/min	230A	230V AC				12L	
075	7,5 kW	069	6,9 l/min						15L	
110	11,0 kW	073	7,3 l/min						18L	
		085	8,5 l/min					8S		
		090	9,0 l/min					10S		
		106	10,6 l/min					12S		
		115	11,5 l/min					16S		
		119	11,9 l/min							
		132	13,2 l/min							
		140	14,0 l/min							
		162	16,2 l/min							
		174	17,4 l/min							
		203	20,3 l/min							
		230	23,0 l/min							
		232	23,2 l/min							
		276	27,6 l/min							
		290	29,0 l/min							
		314	31,4 l/min							

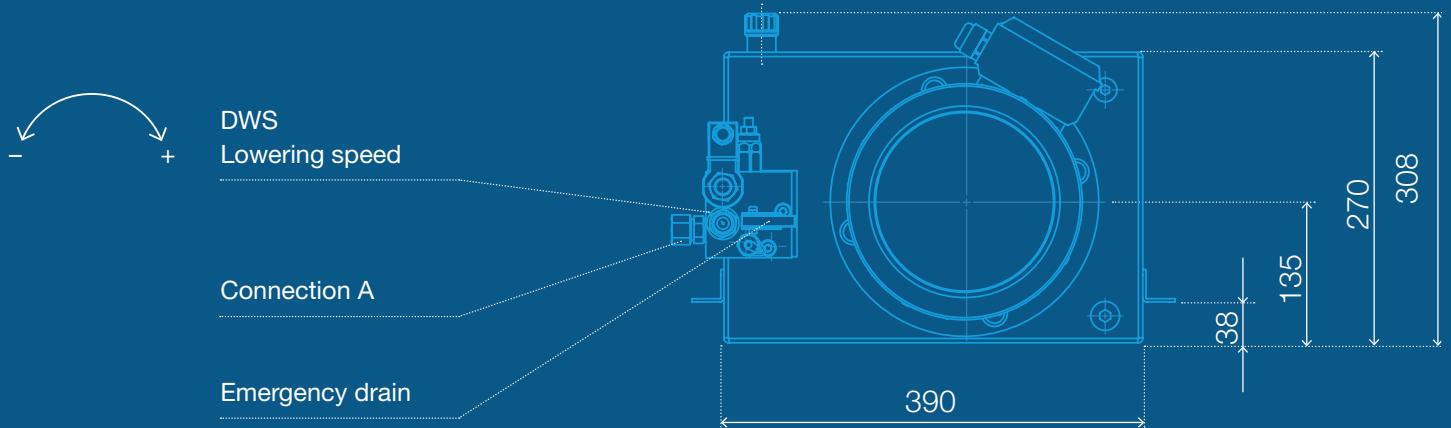
Additions configurable as:	
Abbreviation	Meaning
90DEG	Swivelling by 90 degrees
AH	Drain cock
BIM	Electric motor with bimetallic release
EX	Relevant components with explosion protection
HEIZ	Heating
HFC	Water glycol
KAL	Electric motor with PTC resistor
LED	Valve fault module with LED
MAN	Pressure gauge
NAT	Level indicator with temperature indicator
NS	Level switch
OEW	Oil tray
PN	Pressure switch
RF	Return flow filter
S1	Motor for S1 operation
TM47	Temperature switch
TW	Drip pan
V0	For RF contamination indicator optical
VS	For RF contamination indicator switch
WM	Wall assembly (for V installation position)

Example type: BF25-040-119-024D-AJ-H-12L-1-BIM-PN-RF

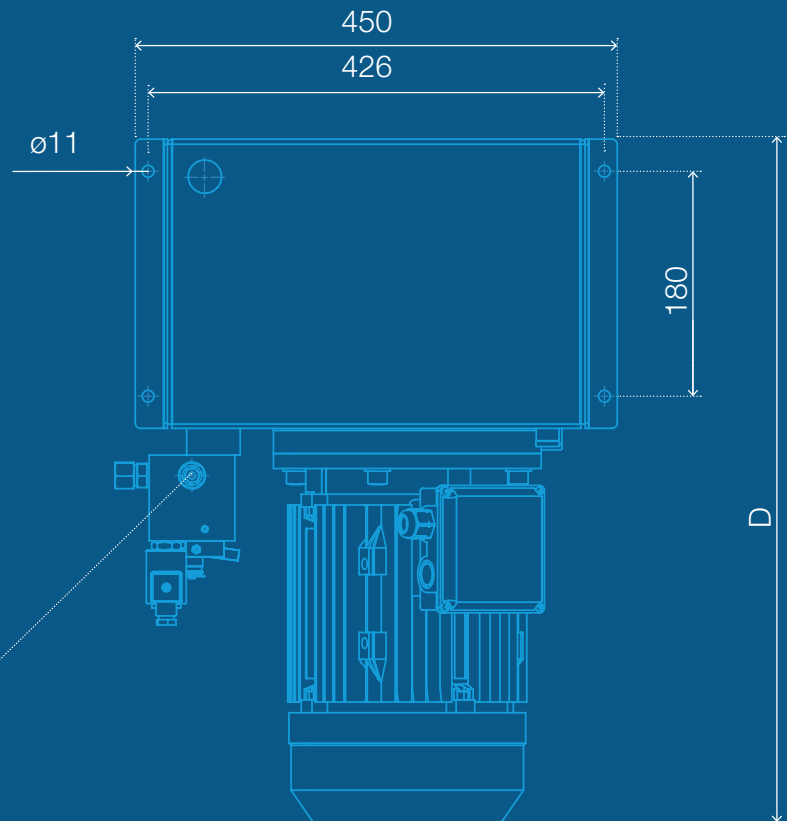
Many other combinations are possible!

Dimensions vary depending on hydraulic circuit and design.

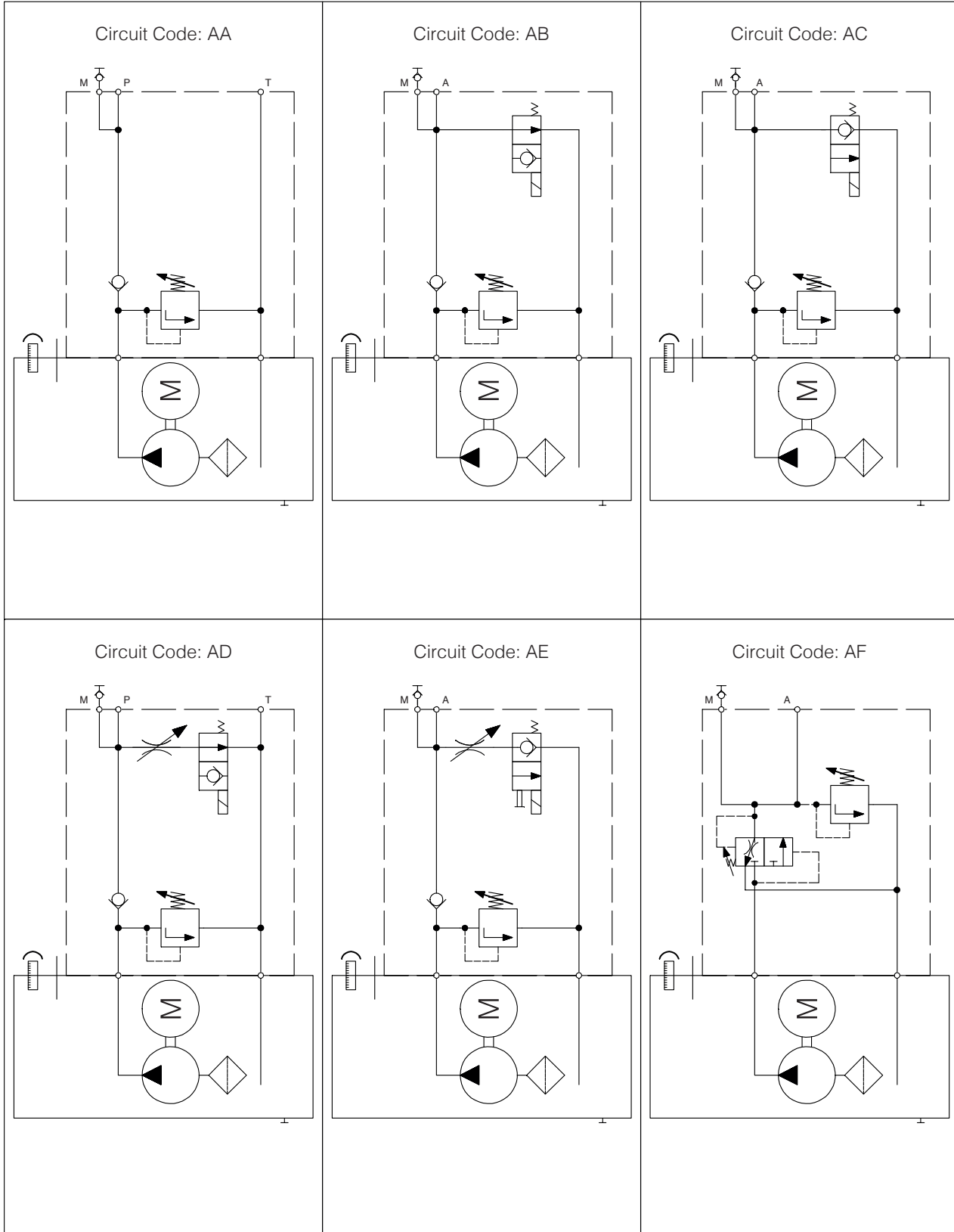
The following dimensions are examples:
Type BF25-XXX-XXX-XXXX-AJ-H-12S-1



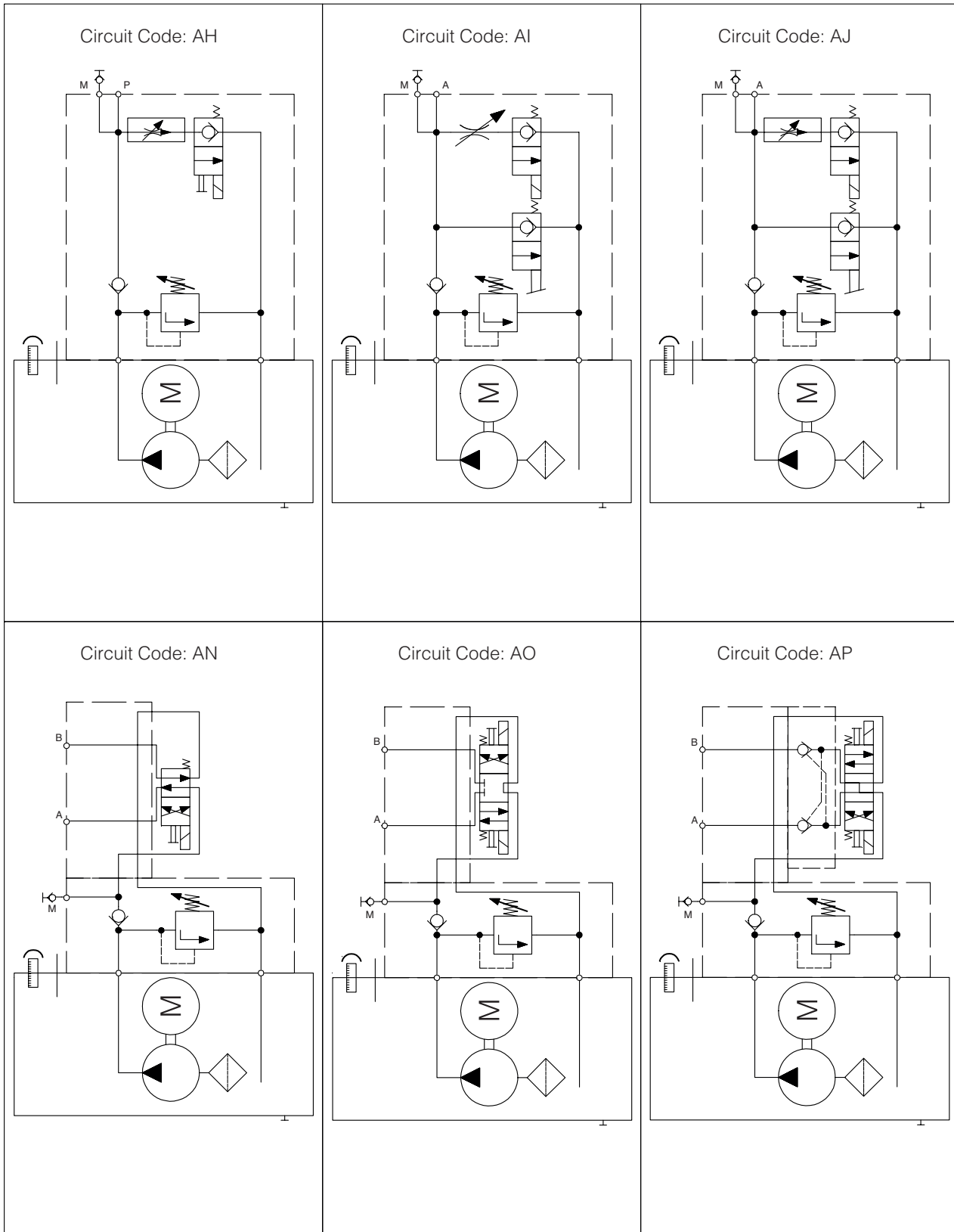
Performance [kW]	D [mm]
2,2 kW	615
3,0 kW	615
4,0 kW	615
5,5 kW	635
7,5 kW	635
11,0 kW	675



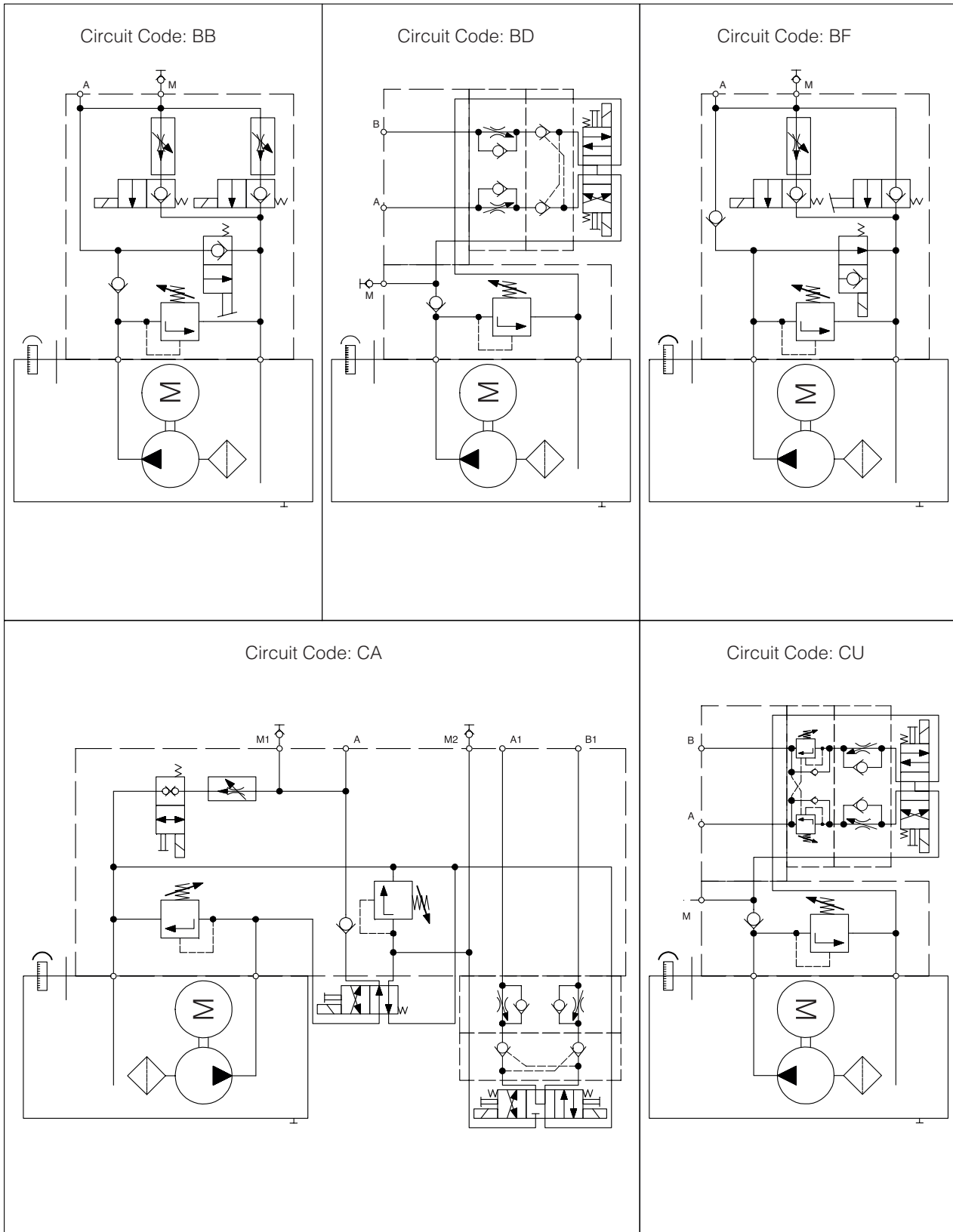
Hydraulic circuit diagrams



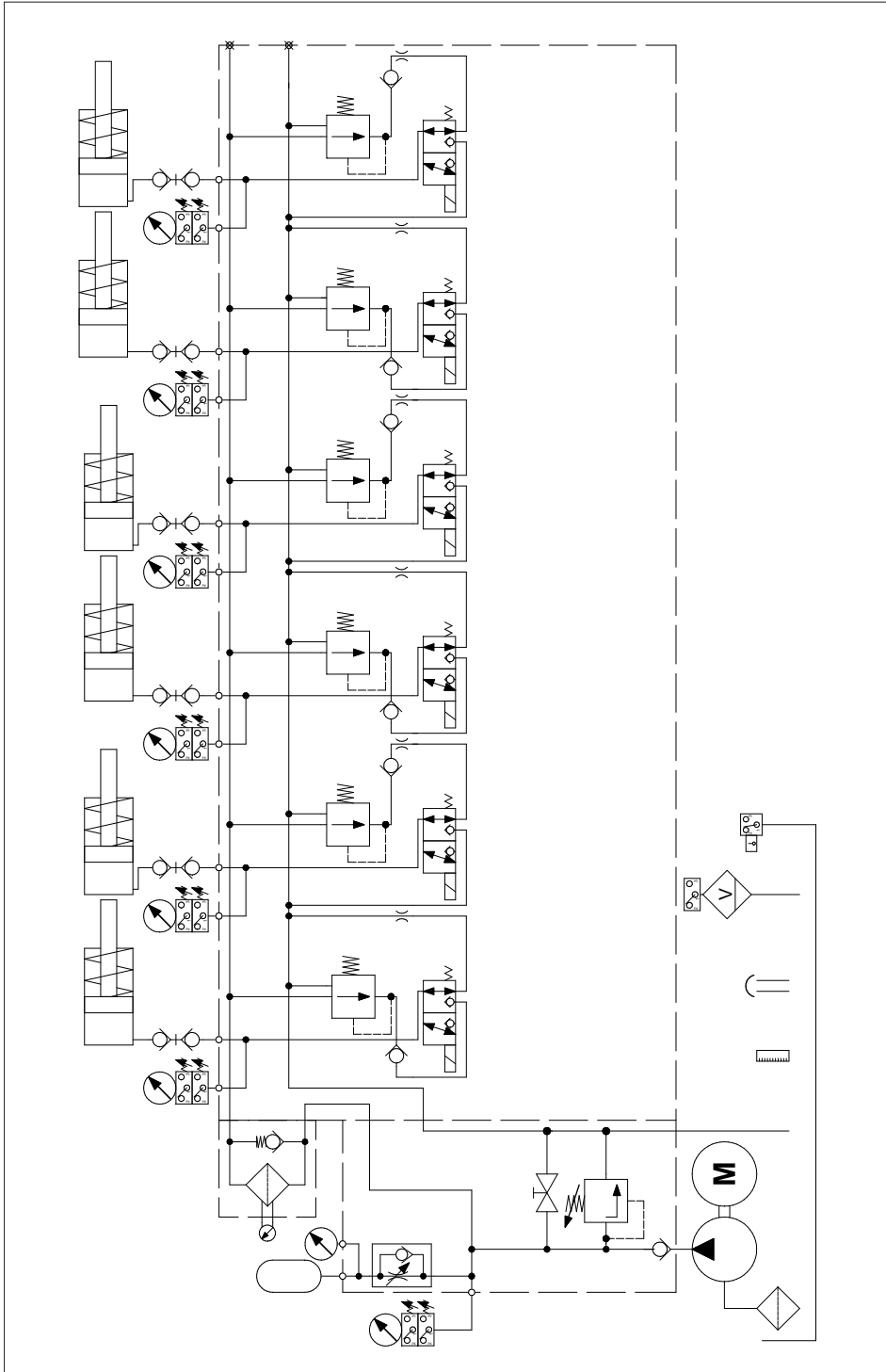
Hydraulic circuit diagrams



Hydraulic circuit diagrams



Hydraulic circuit diagrams



Here is an example of our possibilities (see above):

Various combinations are possible. Please feel free to contact us!

We will develop your idea into our product!