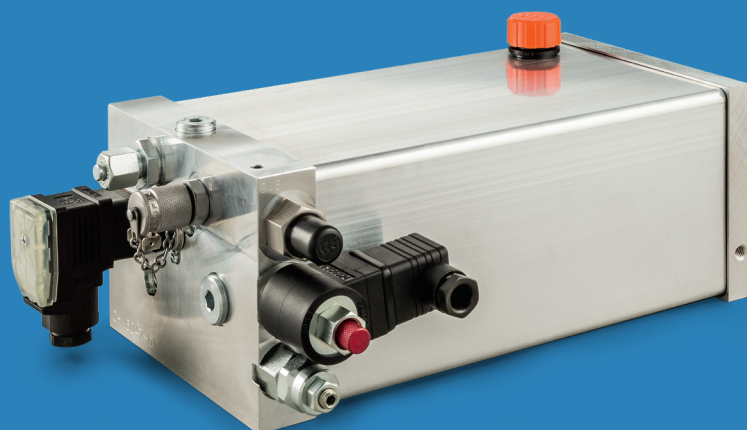


ZPU20



Description

Hydraulic unit with high power density: The electric drive and the hydraulic pump are installed in the oil reservoir; the multifunctional support plate accommodates all control elements, the hydraulic connection and the electric connection.

The compact design of the hydraulic unit makes it ideally suited for use in lifting tables, lifting platforms, handling systems, etc. or in machine tools as a clamping pressure supply.

Due to their design, these compact units are designed for intermittent operation, i.e., continuous operation is only possible with reduced power. If not indicated otherwise, the power ratings are given for operating mode S3-10%.

Technical data

Operating voltage

400 V, 50 Hz, 3 ~ / 480 V, 60 Hz, 3 ~
Special voltages available

Capacities

0,75 kW

Rated current

2,1 A

System pressure

up to 230 bar (short-time)

Installation position

horizontal and vertical

Further data according to type code (page 3)

Operating conditions

Permissible operating media

Mineral oil HLP, DIN 51524, ISO VG 22,
32 or 46

Permissible operating temperature

-10°C to +80°C

Maximum operating pressure dependent
 on installed capacity and pump flow rate

Capacity	0,75 kW	Working volume of pump
Pump flow rate		
2,2 l/min	200 bar	0,80 cm ³ /U
3,4 l/min	134 bar	1,20 cm ³ /U
4,5 l/min	100 bar	1,60 cm ³ /U
5,6 l/min	80 bar	2,00 cm ³ /U
7,0 l/min	64 bar	2,50 cm ³ /U
9,0 l/min	50 bar	3,20 cm ³ /U
10,6 l/min	33 bar	3,80 cm ³ /U

→ Further combinations on request

Advantages

- + Smallest dimensions
(see page 3)
- + High power density
- + Easy to install
- + Favourable price due to
serial production
- + Many types are available at
short notice
- + Quick exchange thanks to
electric plug connections
- + High level of quality

Type code: ZPU20-XX-XXX-XXX-XXXX-XX-X-X-X-Y.....

Tank effective volume		Installed performance		Pump flow rate		Control voltage		Hydraulic circuit diagram	Installation position		Hydraulic connection	Construction status		
18	1,8 L	075	0,75 kW	022	2,2 l/min	012D	12V DC	see pages 5-8	H	Horizontal	G1_4			
22	2,2 L			034	3,4 l/min	024D	24V DC		I	Vertical	G3_8			
27	2,7 L			045	4,5 l/min	024A	24V AC		S	Special	G1_2			
				056	5,6 l/min	230A	230V AC	many more on request			8L			
				070	7,0 l/min								10L	
				090	9,0 l/min								12L	
				106	10,6 l/min								15L	
											8S			
											10S			
											12S			

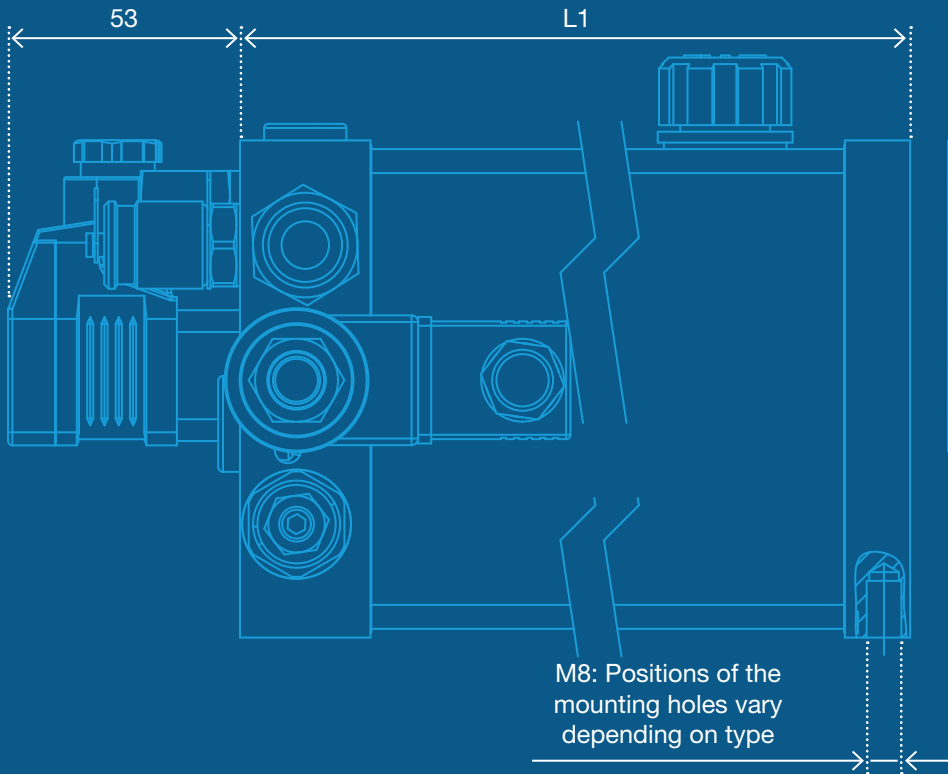
Additions configurable as:	
Abbreviation	Meaning
90DEG	Swivelling by 90 degrees
AH	Drain cock
HEIZ	Heating
LED	Valve fault module with LED
MAN	Pressure gauge
NA	Level indicator (oil-level gauge)
NAT	Level indicator with temperature indicator
NS	Level switch
OEW	Oil tray
PN	Pressure switch
RF	Return flow filter
TM47	Temperature switch
TW	Drip pan
VO	For RF contamination indicator optical
VS	For RF contamination indicator switch
WM	Wall assembly (for V installation position)

Example type: ZPU20-18-075-024D-AH-H-10L-1-PN-TM47

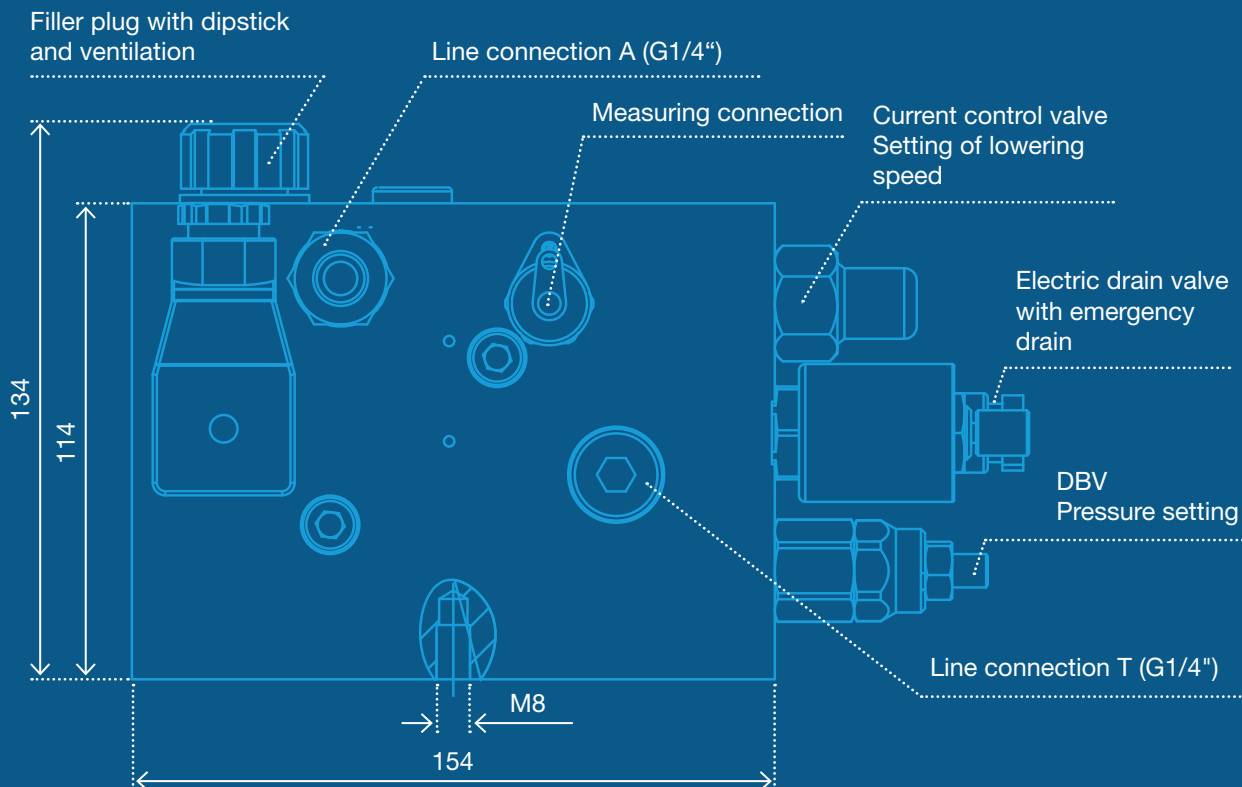
Many other combinations are possible!

Dimensions vary depending on hydraulic circuit and design.

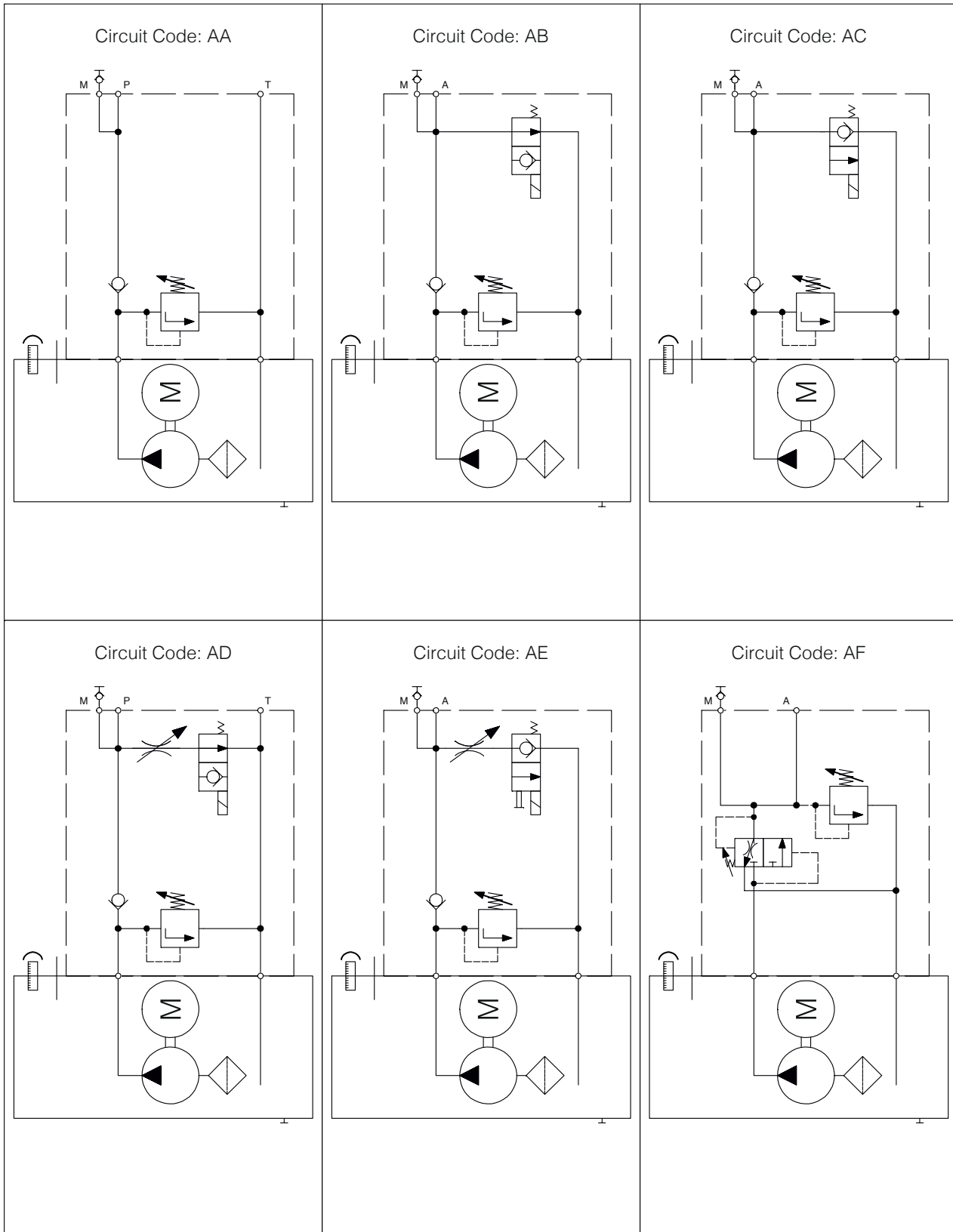
The following dimensions are examples:
Type ZPU20-XX-XXX-XXX-XXXX-AH-H-G1_4-1



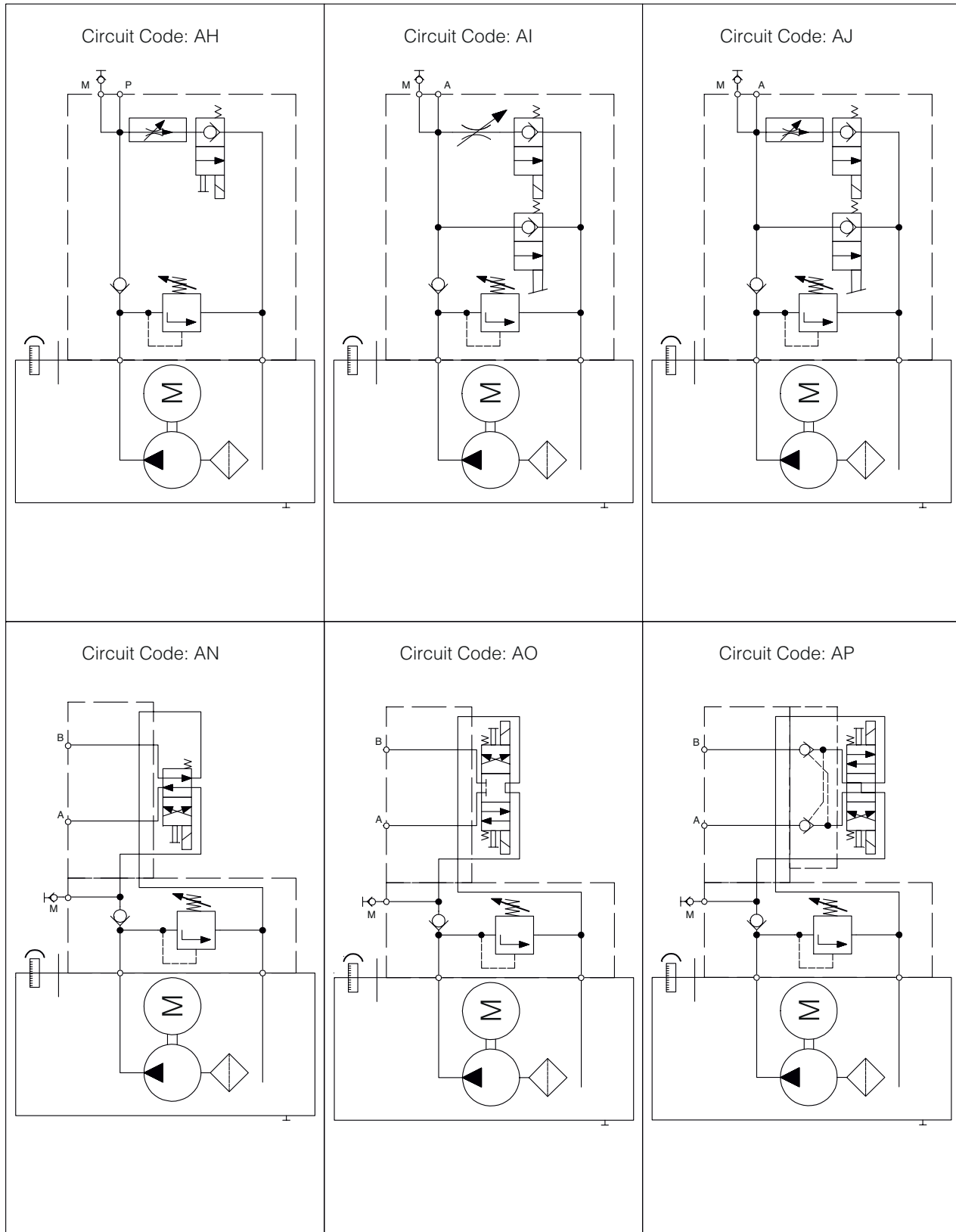
Unit dimensions			
Type	ZPU20-18	ZPU20-22	ZPU20-27
Filling capacity	2,00 l	2,60 l	3,30 l
Effective volume	1,80 l	2,20 l	2,70 l
Length L1	290 mm	341 mm	375 mm
Overall length	343 mm	394 mm	428 mm



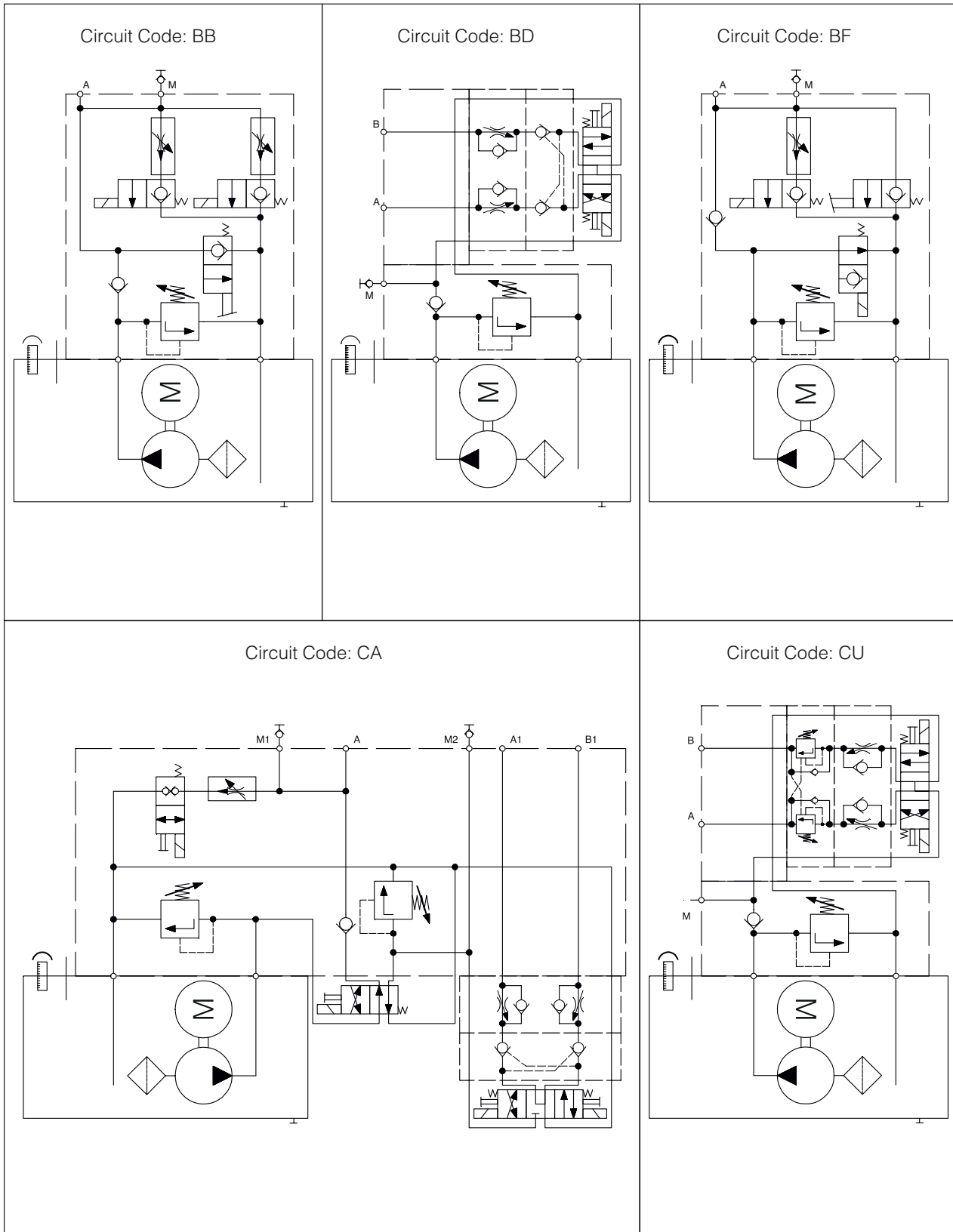
Hydraulic circuit diagrams



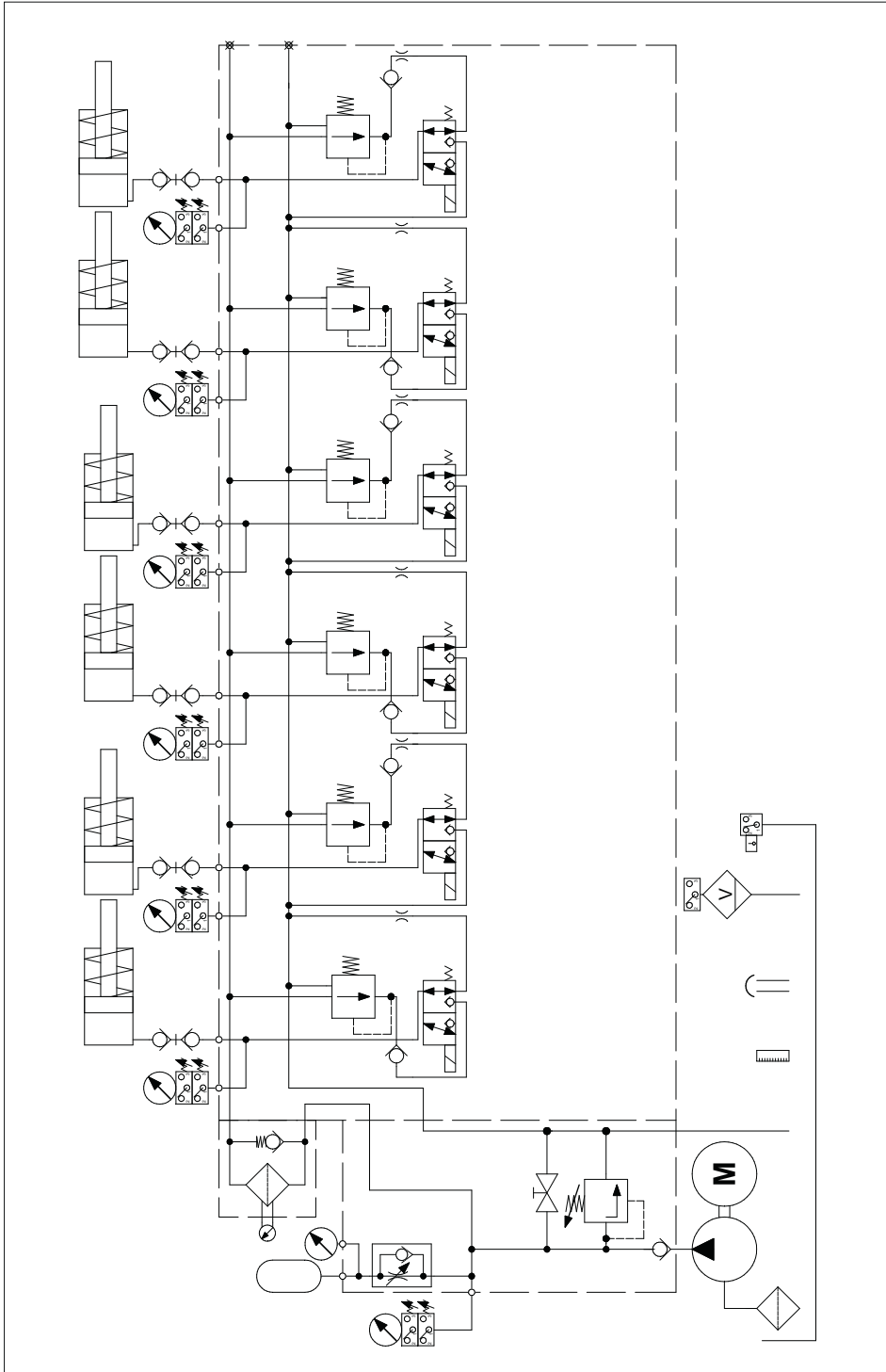
Hydraulic circuit diagrams



Hydraulic circuit diagrams



Hydraulic circuit diagrams



Here is an example of our possibilities (see above):

Various combinations are possible. Contact us!

We will develop your idea into our product!