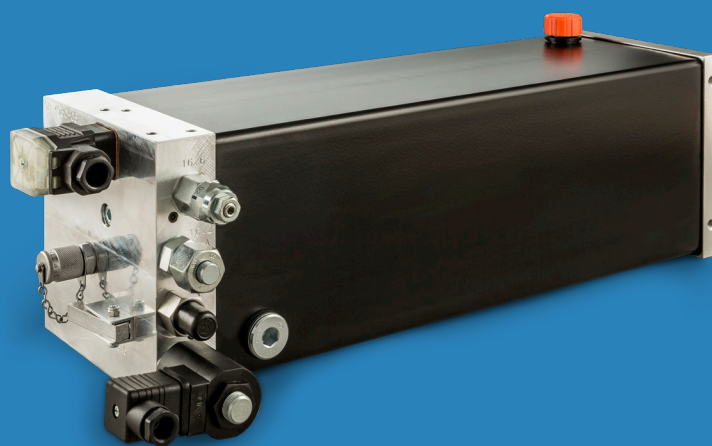


# ZPU30



## Description

Hydraulic unit with high power density: The electric drive and the hydraulic pump are installed in the oil reservoir; the multifunctional support plate accommodates all control elements, the hydraulic connection and the electric connection.

The compact design of the hydraulic unit makes it ideally suited for use in lifting tables, lifting platforms, handling systems, etc. or in machine tools as a clamping pressure supply.

Due to their design, these compact units are designed for intermittent operation, i.e., continuous operation is only possible with reduced power. If not indicated otherwise, the power ratings are given for operating mode S3-10%.

## Technical data

### Operating voltage

400 V, 50 Hz, 3 ~ / 480 V, 60 Hz, 3 ~

### Capacities

3 kW / 1,5 kW

### Rated current

6.8 A (for 3 kW) / 4.0 A (for 1.5 kW)

### System pressure

up to 230 bar

### Installation position

horizontal or vertical

Further data according to type code (page 3)

## Operating conditions

### Permissible operating media

Mineral oil HLP, DIN 51524, ISO VG 22, 32 or 46

### Permissible operating temperature

-10°C to +80°C

Maximum operating pressure dependent on installed capacity and pump flow rate

Capacity	1,5 kW	3,0 kW	Working volume of pump
Pump flow rate			
2,2 l/min	230 bar		0,80 cm <sup>3</sup> /U
3,4 l/min	230 bar		1,20 cm <sup>3</sup> /U
4,5 l/min	180 bar	230 bar	1,60 cm <sup>3</sup> /U
5,6 l/min	145 bar	230 bar	2,00 cm <sup>3</sup> /U
7,0 l/min	116 bar	230 bar	2,50 cm <sup>3</sup> /U
9,0 l/min	91 bar	180 bar	3,20 cm <sup>3</sup> /U
10,6 l/min	76 bar	152 bar	3,80 cm <sup>3</sup> /U
12,0 l/min	67 bar	135 bar	4,30 cm <sup>3</sup> /U
13,4 l/min	60 bar	120 bar	4,80 cm <sup>3</sup> /U

## Advantages

- + Smallest dimensions  
(see page 3)
- + High power density
- + Easy to install
- + Favourable price due to serial production
- + Many types are available at short notice
- + Quick exchange thanks to electric plug connections
- + High level of quality

Type code: ZPU30-XX-XXX-XXX-XXXX-XX-X-X-X-Y.....

Tank effective volume		Installed Performance		Pump flow rate		Control voltage		Hydraulic circuit diagram	Installation position		Hydraulic connection	Construction status
25	2,5 L	150	1,5 kW	022	2,2 l/min	012D	12V DC	see pages 5-8	H	Horizontal	G1_4	
45	4,5 L	300	3,0 kW	034	3,4 l/min	024D	24V DC		V	Vertikal	G3_8	
65	6,5 L			045	4,5 l/min	024A	24V AC		S	Sonder	G1_2	
85	8,5 L			056	5,6 l/min	230A	230V AC	many more on request			8L	
				070	7,0 l/min						10L	
				090	9,0 l/min						12L	
				106	10,6 l/min						15L	
				120	12,0 l/min						8S	
				134	13,4 l/min					10S		
										12S		

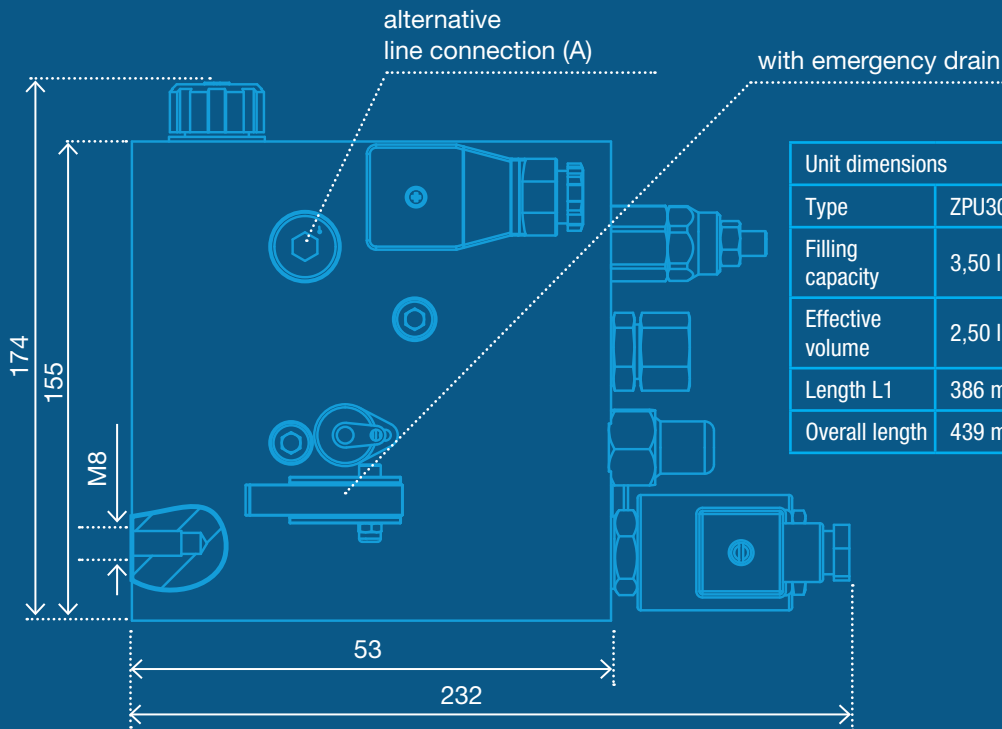
Additions configurable as:	
Abbreviation	Meaning
90DEG	Swivelling by 90 degrees
AH	Drain cock
HEIZ	Heating
LED	Valve fault module with LED
MAN	Pressure gauge
NA	Level indicator (oil-level gauge)
NAT	Level indicator with temperature indicator
NS	Level switch
OEW	Oil tray
PN	Pressure switch
RF	Return flow filter
TM47	Temperature switch
TW	Drip pan
VO	For RF contamination indicator optical
VS	For RF contamination indicator switch
WM	Wall assembly (for V installation position)

Example type: ZPU30-45-300-070-024D-AJ-H-10L-1-PN-TM47

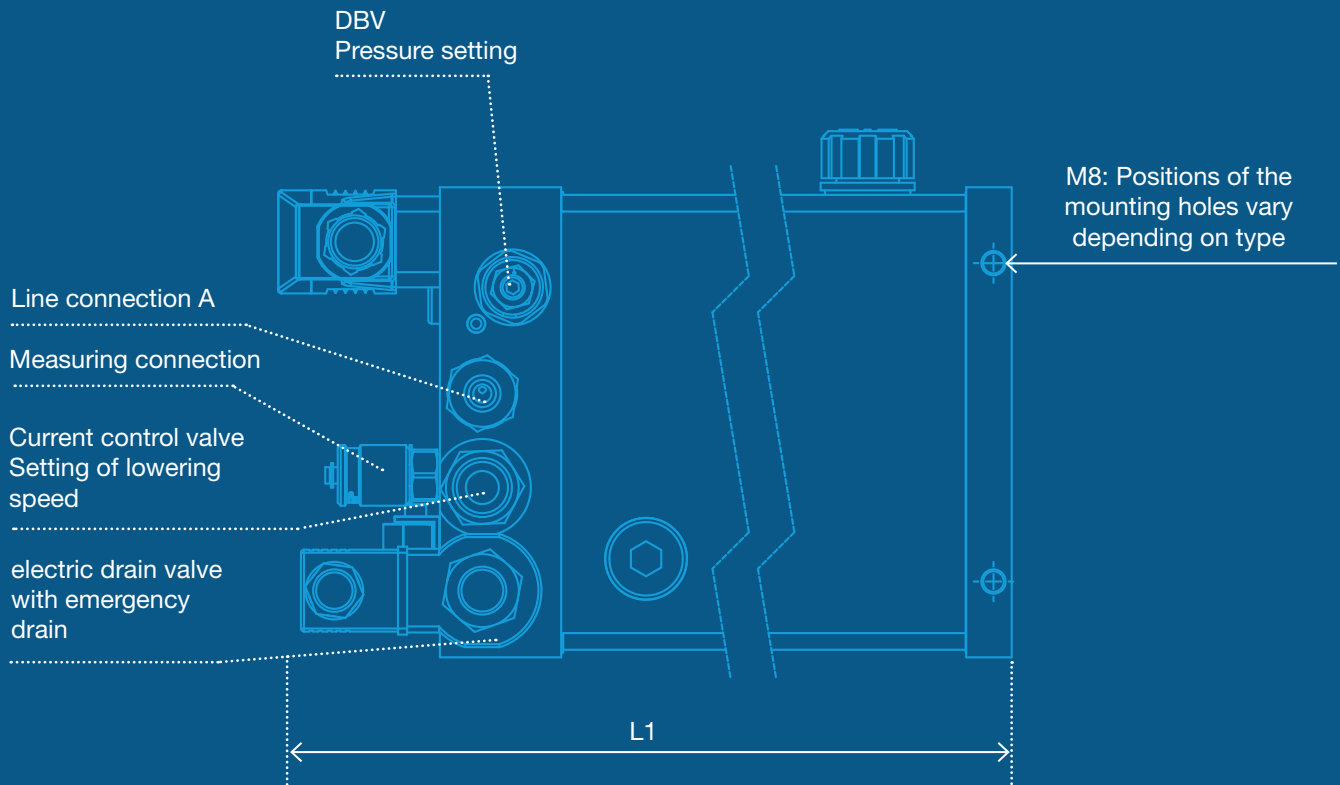
Many other combinations are possible!

Dimensions vary depending on hydraulic circuit and design.

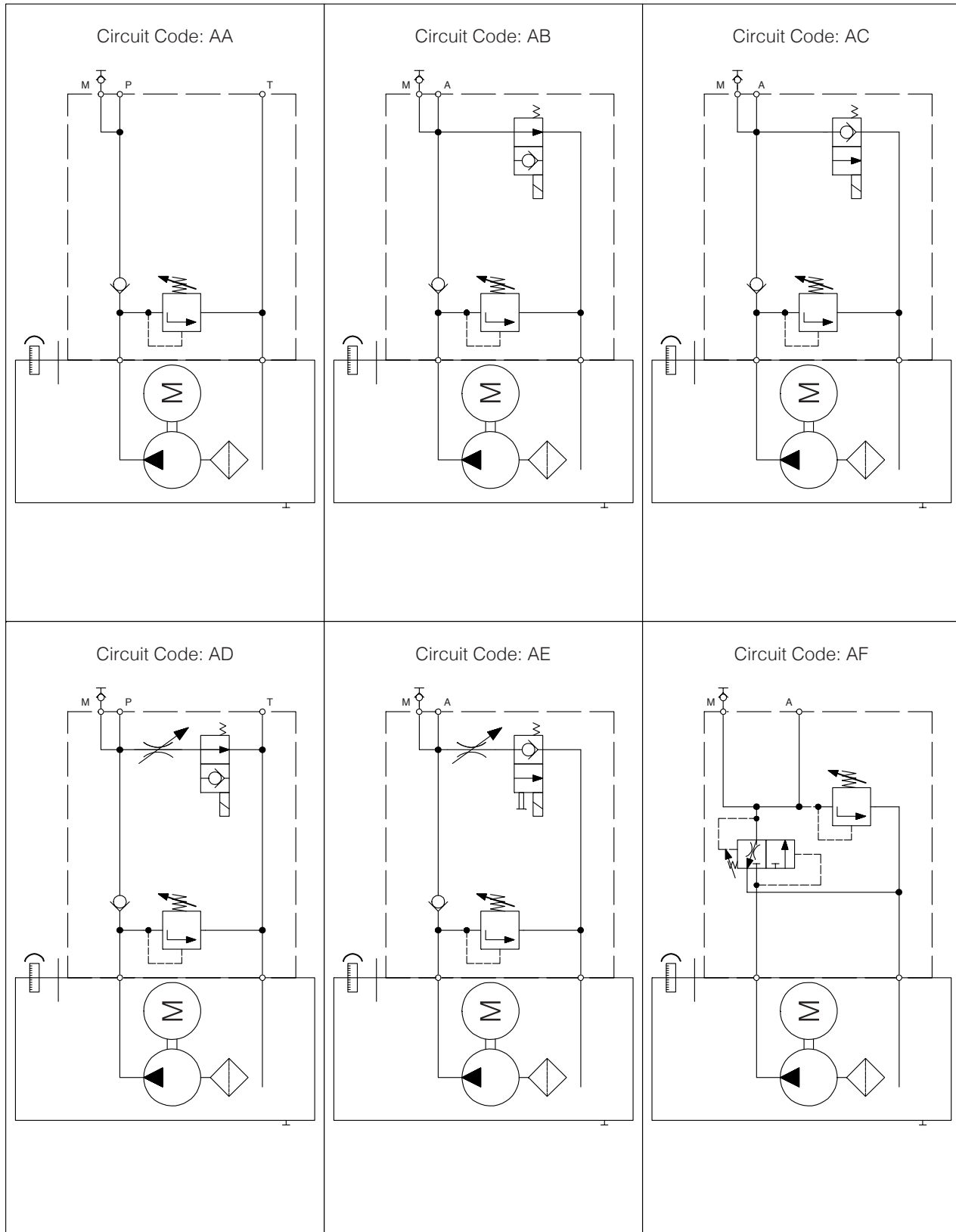
The following dimensions are examples:  
Type ZPU30-XX-XXX-XXX-XXXX-AJ-H-12S-1



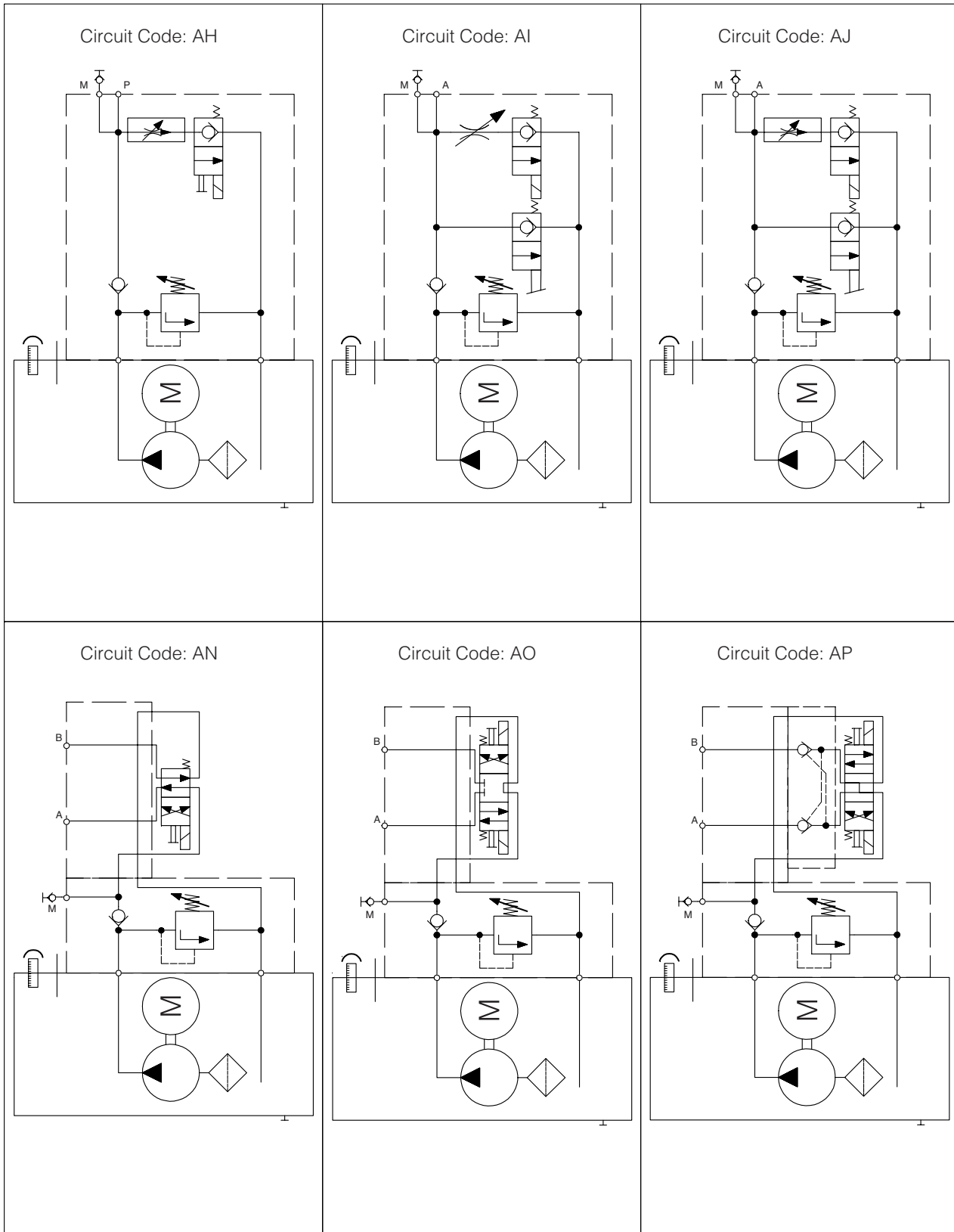
Unit dimensions				
Type	ZPU30-25	ZPU30-45	ZPU30-65	ZPU30-85
Filling capacity	3,50 l	5,40 l	7,60 l	9,60 l
Effective volume	2,50 l	4,50 l	6,5 l	8,50 l
Length L1	386 mm	465 mm	591 mm	691 mm
Overall length	439 mm	519 mm	644 mm	744 mm



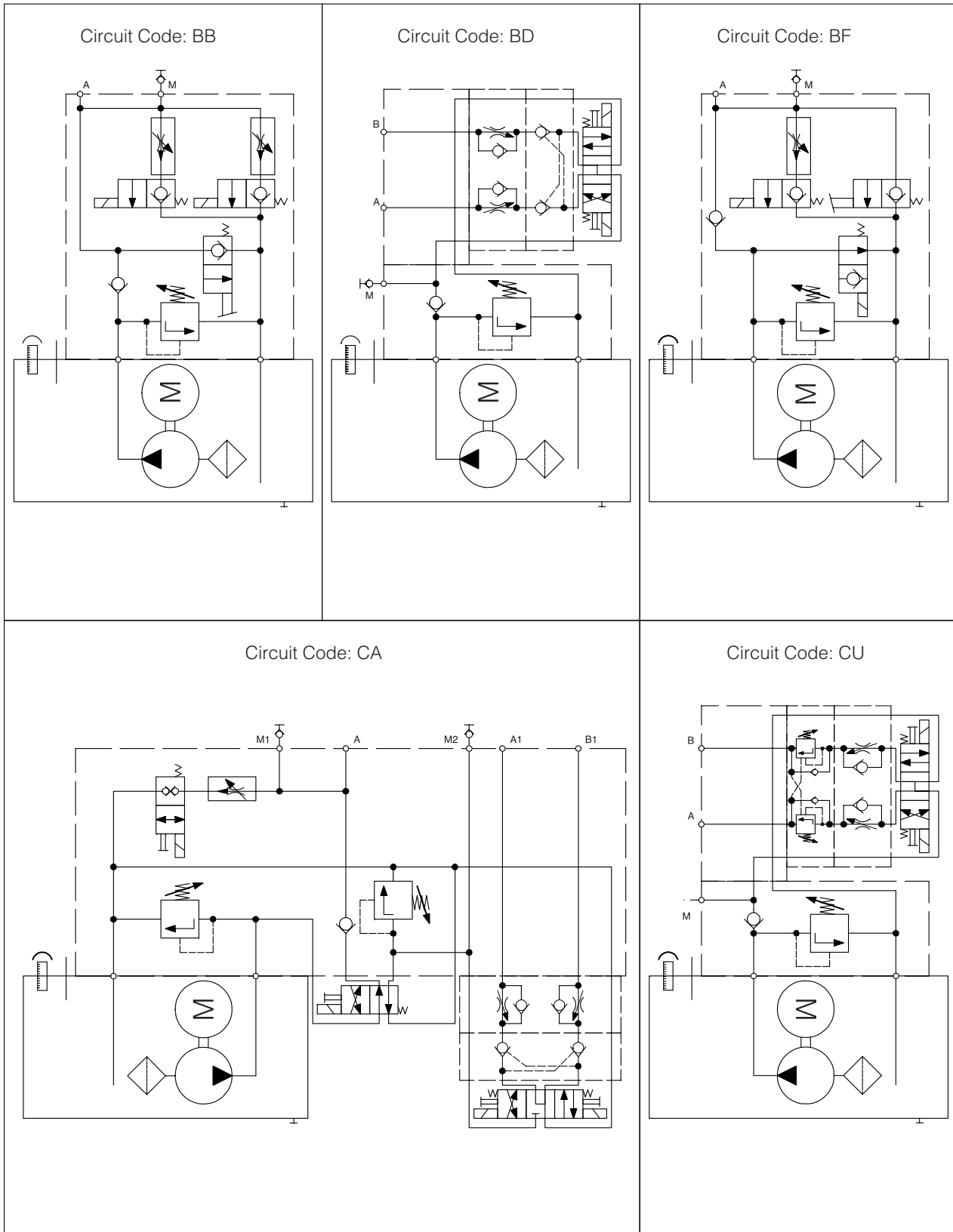
Hydraulic circuit diagrams



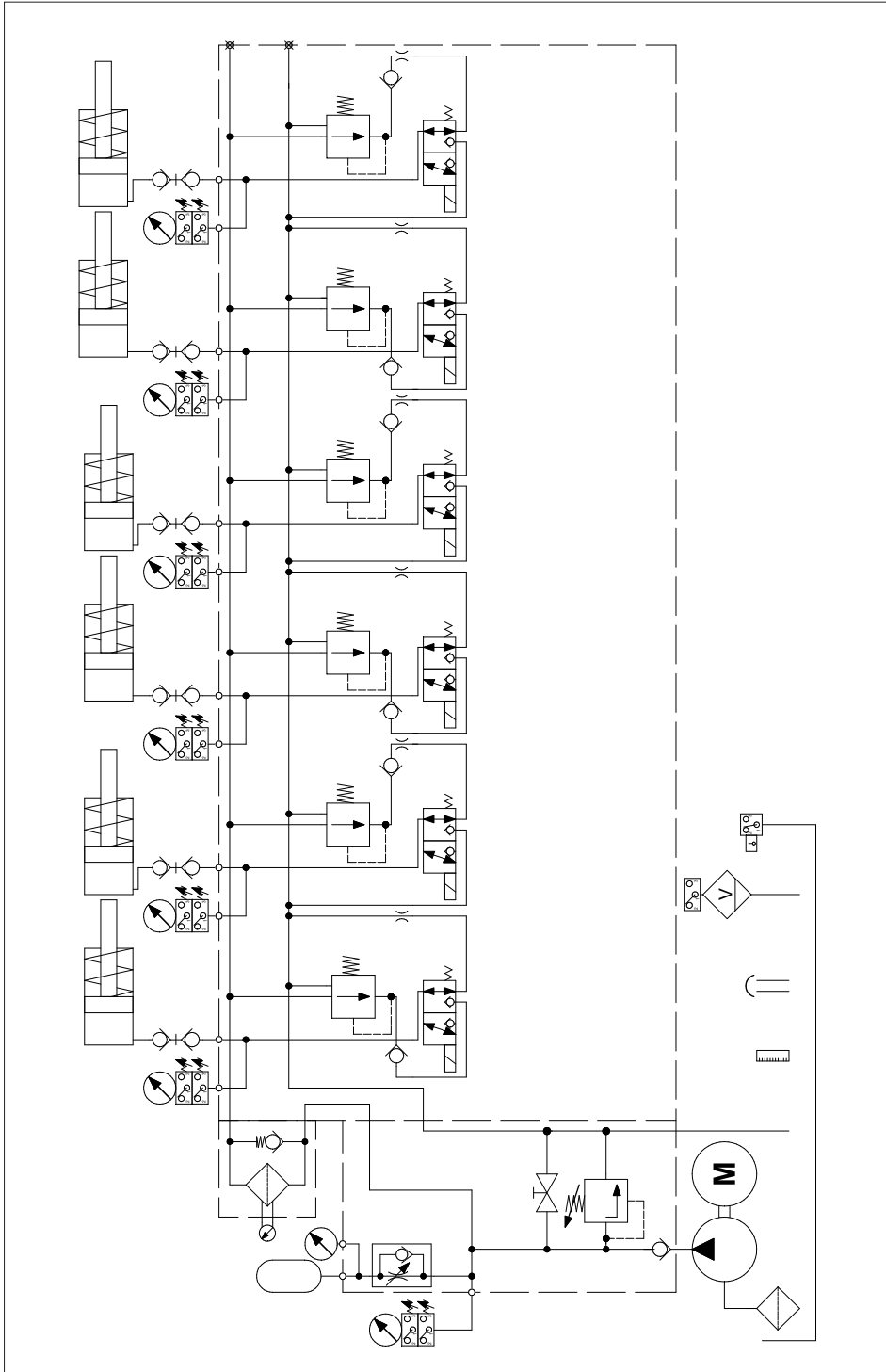
Hydraulic circuit diagrams



Hydraulic circuit diagrams



Hydraulic circuit diagrams



Here is an example of our possibilities (see above):

Various combinations are possible. Contact us!

We will develop your idea into our product!